



## FULL-BODY CLEANSING WIPES

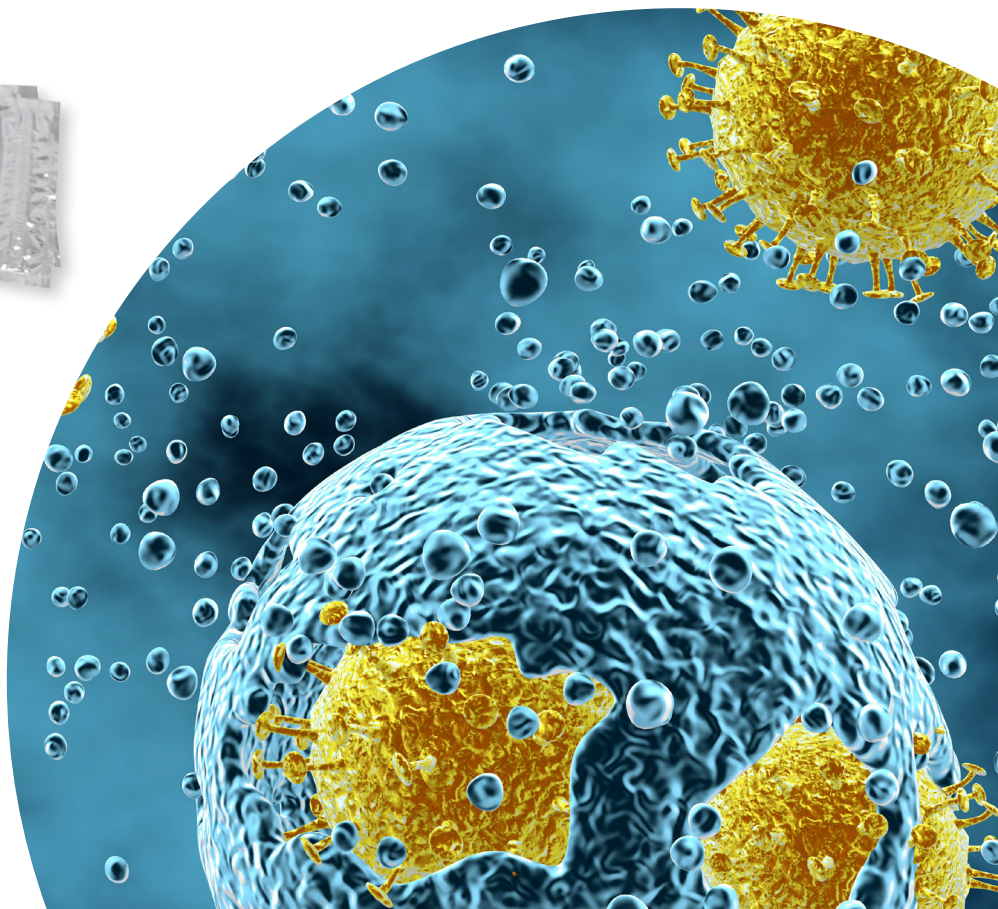
BioSpear™ Full Body Cleansing Wipes were developed for advanced hygiene in challenging environments when showering or bathing is not an option.

Our alcohol-free, full body cleansing wipe features a water-based formulation to clean and eliminate 99.99% of skin-based, odor-causing bacteria in just 15 seconds. The bio-based, fragrance-free formulation is powered by Benzalkonium Chloride; a safe, powerful and effective antiseptic. Our full body wipes also contain coconut extract and witch hazel to sooth skin and prevent dryness.

BioSpear™ Full Body Cleansing Wipes leave no sticky residue on skin, and are the gentlest, rinse-free way to clean when traditional bathing is not an immediate option. Each thick, extra large body wipe can easily clean the entire body.



ITEM	DESCRIPTION	CASE QUANT.
BSSBW-10	Body Wipe 20 ct. Individual Wipe	24
BSSBW-50	Body Wipe 50 ct. Soft Pack	12



# BIOSPEAR™ FULL BODY CLEANSING WIPES | PRODUCT INFORMATION

### Why use BioSpear™ Full Body Cleansing Wipes?

BioSpear™ Full Body Wipes are formulated to clean, sanitize, soothe and protect skin. Our body wipes contain benzalkonium chloride; an effective antimicrobial agent against odor-causing bacteria. For advanced hygiene in the most challenging environments, use these wipes whenever a shower or bath is not an option.

### How effective are BioSpear™

#### Full Body Cleansing Wipes?

The active ingredient of BioSpear™ Full Body Cleansing Wipes was tested for antimicrobial efficacy in a time kill assay by an independent laboratory. The following data indicates a minimum of a log-three reduction after 15 seconds in vitro contact time.

**Active Ingredient:** Benzalkonium Chloride (.1%)

**Purpose:** Antimicrobial

**Uses:** Decreases bacteria on skin.

**Warnings:** For external use only. Do not use if you are allergic to any of the ingredients.

When using this product, avoid contact with eyes. If eye contact occurs, flush eyes with water immediately. If irritation persists for more than 24 hours, consult a doctor. If skin irritation or rash appears, stop use and consult a doctor.

**Directions:** Tear open package and remove wipe. Keep wipe folded and use as you would a wash cloth. Unfold wipe as you go so that you have a clean side for each part of the body. Allow skin to air dry. Do not flush wipe. Dispose in trash.

**Inactive ingredients:** Water, Witch Hazel, Cetrimonium Chloride, Citric Acid, Cocamine Oxide, Glycereth-17, Laurtrimonium Chloride.

CHALLENGE MICROORGANISM	ATCC #	LOG10 REDUCTION	% REDUCTION
Acinetobacter baumannlii	19606	>5.65	> 99.999%
Enterococcus faecalis Vancomycin Resistant	51575	>5.46	99.999%
Escherichia coli	11229	5.23	99.999%
Escherichia coli 0157:H7	35150	5.22	99.999%
Klebsiella pneumoniae	4352	2.44	99.6%
Listeria monocytogenes	19117	>5.58	>99.999%
Pseudomonas aeruginosa	15442	>5.51	>99.999%
Salmonella enteritidis	4931	>5.69	>99.999%
Salmonella enterica serotype paratyphi B	8759	5.38	>99.999%
Salmonella enterica serotype pullorum	19945	5.12	99.999%
Salmonella enterica serotype typhimurium	23564	>6.02	>99.9999%
Salmonella typhi	6539	>5.64	>99.999%
Shigella dysenteriae	13313	>5.48	>99.999%
Shigella flexneri	12022	4.45	>99.99%
Shigella sonnei	25931	>5.07	>99.999%
Staphylococcus aureus	6538	3.83	>99.9%
Staphylococcus epidermidis	12228	>5.25	>99.999%
Vibrio cholera	11623	>4.47	>99.99%
Yersinia enterocolitica	23715	5.74	>99.999%
Klebsiella pneumonia NDM -1 positive			
1000527 ("New Dehli" superstrain)		>5.64	>99.9999%
Staphylococcus aureus Community Associated (MRSA)		>5.40	>99.999%